

F800R (2008-2016)



vSystem Installation

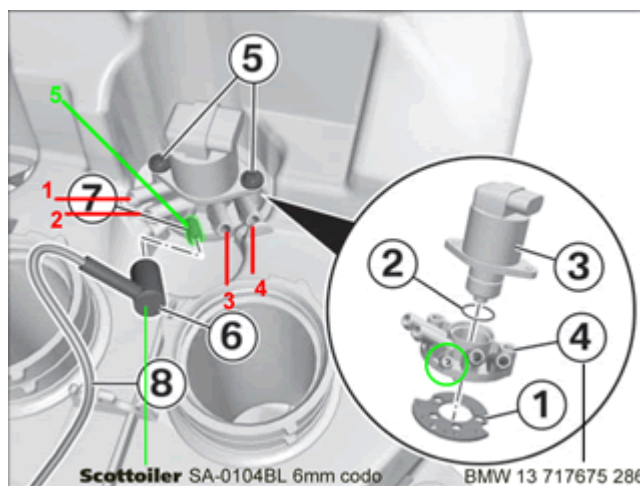
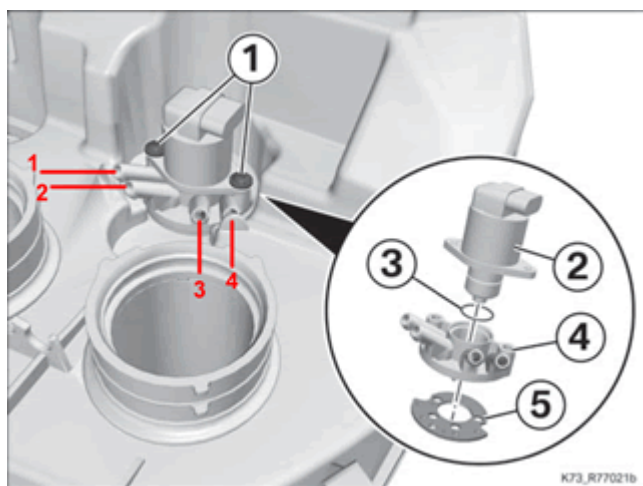
The following instructions apply both to the BMW kit TRA00002 and the universal vSystem. The BMW kit requires in addition the 5 intake vacuum adapter TRA75286 (supplied). The vSystem requires TRA75286, the 6mm elbow TRA00104 and the chain guard adapter TRA00615.

Step 1 - Find a vacuum source.

There is no convenient / free vacuum connector on the European version of the BMW F800R. However, you can use the method used by BMW dealers when fitting this kit to the F800R, as follows;

Most motorcycles have a vacuum outlet on the motorcycle's idle control device on the airbox.

The BMW F800R (Europe) has 4 intakes, as shown in the picture below left, but all the tubes are in use.



The BMW F800R (USA) has 5 intakes; the fifth is to connect the EVAP anti-polluting system, as shown in the image on the right.

The installation of the Scottoiler requires replacement of the standard piece (called "distributor") with the American version (TRA75286). Then, the extra spigot is used to mount the special 6mm Scottoiler elbow (TRA00104), and thus make a vacuum connection easily.

Step 2 - Find a place for the reservoir.



Shown above is the location for the oil reservoir (RMV), showing it attached to the outside of the left hand seat rail on the subframe. BMW supply a bracket with the TRA00002 kit, but it isn't required for the F800R. It's included as the kit is the same for both R and GS models. You can also mount a Lube Tube if you wish, see below;



Step 3 - Mount the dispenser and connect the system.

Please note the attachment of the dispenser assembly to the chain guard, showing the use of the angled spacer TRA00615.



Step 4 - Fill, prime and set up your vSystem.

Once fitted, fill and prime the system and set the adjuster knob to 'prime'. Start the engine and turn the adjuster knob until a flow of between 1 and 2 drops per minute is achieved. Check the condition of your chain after a ride, and then adjust as required.

For best results clean your chain before fitting the Scotttoiler using paraffin or similar. Then lightly oil the chain from the bottle using a rag or a brush, this allows the oil from the Scotttoiler to reach both sides of the chain. 1 to 2 drops per minute will maintain this film of oil on the chain.