



# Installation

Model specific instructions

For:

- **Ducati Streetfighter 848**
- **Ducati Streetfighter 1098**
- **Ducati Streetfighter V4**

These instructions are a model specific add-on to the general BoosterPlug installation instructions.

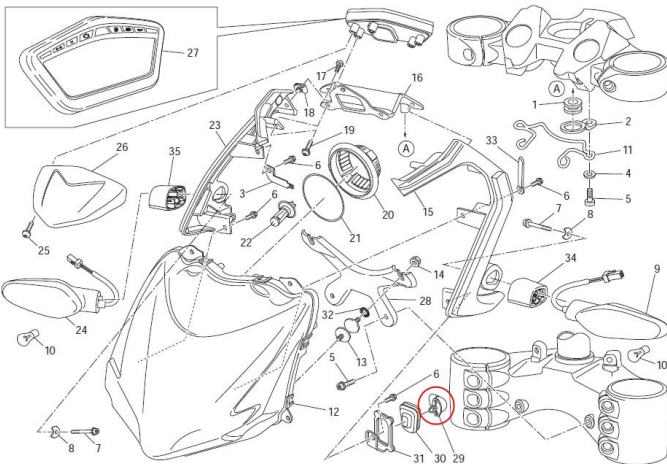
## Installation Tips

- The pictures below should help you locate the AIT sensor where the BoosterPlug is installed.
- Install the BoosterPlug module as per the general installation papers.
- The metal sensor on the BoosterPlug is already in the right spot, so you just need to secure it with a zip-tie to prevent it from flopping around.

## Pictures

For:

- **Ducati Streetfighter 848**
- **Ducati Streetfighter 1098**



For:

- **Ducati Streetfighter V4**

