

Mounting LED emblem indicators + DRL
70mm – BMW R1250 RT LC

1. Disassemble the left and right fairing sections of the bike.



2. At the front, inside fairing it is attached with 2 screws. The rest of the fairing is clicked into rubbers.



3. Disassemble the emblem bracket with the 2 torx screws on the inside of the fairing part.



4. Remove the original BMW emblem.



5. This is best done with a flat putty knife or other flat object for example an old bank card.



6. Remove the remaining tape from the back of the emblem and the R1200/1250RT bracket



7. Drill an 8 mm hole in the center as shown. Through the chrome and black plastic at the rear.

So that the cable and the plugs of the SuperSeal plugs can pass through.



8. Degrease the place where the led indicator will be using the supplied alcohol pads and place them on the place of the original emblem.

Bring it in the right position by aligning both horizontal holes with the existing holes where the original emblem was mounted.

This can be done easily, with the 2 supplied wooden pegs.

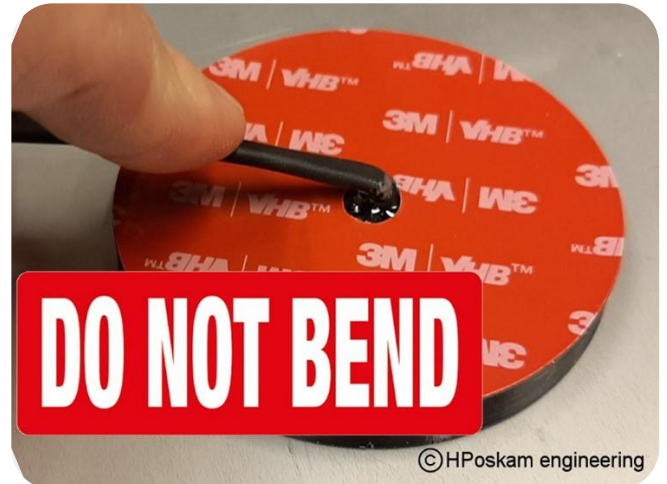


9. Remove the red protective tape on the back of the LED emblem indicator. Now press the led indicator firmly in place and remove the wooden pegs.

Now you can also drill the 2 holes vertically with a 3.1-3.5 mm drill bit and secure them with the screws, washers and nuts provided. To create a flat spot, you can cut away the 2 raised edges. So that the washers and nuts are easier to tighten.

10. Remove the protection tape from the top side of the LED emblem indicator and place the BMW emblem back on the LED indicator.

11. Make sure the wire is not bend this way behind the cover!



12. Stick a piece of painter's tape on the loosened fairing part.

13. Draw a horizontal line using the existing holes as and aid.

14. Now measure out 61 mm from the hard of the first hole as shown. And now carefully drill an 8 mm hole in the fairing.

You will not see this hole when the bracket with the led emblem indicator is mounted.

15. Now place the bracket with the LED emblem indicator back on the fairing and secure it again with the 2 torx screws that were loosened in step 3.

Feed the cable through the drilled 8 mm hole which is right under the emblem.



16. Now connect the 3 contacts to the SuperSeal connector.

The red wire on the left on terminal 1 and the blue wire in the middle on terminal 2 and the brown wire on terminal 3.

17. Make sure that the metal pins are facing up with the rounded side.

And on the black connector, the numbers 1 to 3 are visible, as in the photograph.

Please note that the metal pins can only be inserted one way into the connector.

18. Press the 3 wires firmly into the connector until the small green seals are no longer visible and the metal pins click into place.

19. The back of the wooden pegs can come in handy to press the wires well deeper into the black connector.

20. Cut the wires to the desired length and slide the included heat shrink tubing over the wires.

Heating it with a hair dryer or a gas lighter will shrink it to the correct diameter.

Be careful with open fire near the motorcycle!



21. Connect the led indicators cable to the front existing indicator.

First remove the black tape

Blue on the blue wire this is the +

Brown on the brown wire this is the -

Use the supplied branch clamps, or if you prefer, bare the wire and solder and tape it.

22. The red wire is the power wire of the DRL lights of the LED emblem lights and can be connected to a 12 Volt + wire.

23. Preferably the red wire of the accessory connection. This is switched off automatically by the CAN-bus system 60 seconds after switching off the ignition.

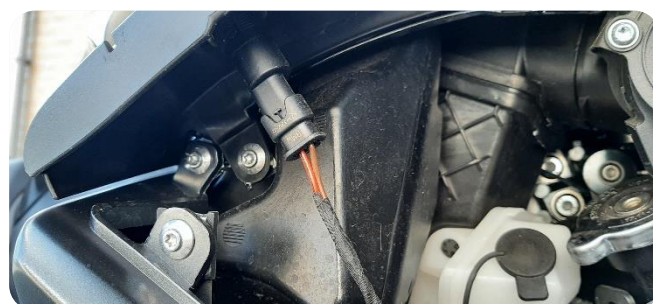
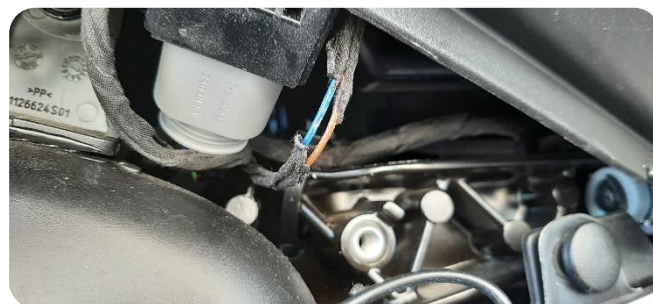
This connection can be found on the right side.

24. Now connect both parts of the Superseal connector to each other.

25. Check operation and repeat, step 21 on the other side of the motorcycle.

Tip: When using a BMW CANbus battery charger connected to the accessory socket, the DRL LEDs will light up!

It is then wise to place a switch between the red wire and the accessory socket so you can switch off the DRL LEDs when using the BMW battery charger!



26. Connecting to the + of the existing auxiliary lights is also a good option.

27. The connector is on the left side of the bike

28. Connector the single T-connector to the Red/blue wire.





NOTE: THIS IS AN AFTERMARKET KIT AND IS NOT ASSOCIATED WITH THE BMW GROUP.

WARRENTY:

The warranty period for this product is 12 months; the warranty applies exclusively to a default product, i.e. when the product is broken or not functioning as it should. In any other case or unforeseen event or incident the relevant standard disclaimer as being noted to buyer is applicable.

PRODUCT DISCLAIMER:

This LED emblem indicator lights are made in-house and are tested and found in good working condition on numerous motorcycles. However it is possible that it might not work on your specific motorcycle. Hence the kit is provided as is without any guarantees or warranty.

CAUTION:

These LED emblem indicator lights are not approved for use on public roads in some countries and should not be used here! Please check your local legislation.

In association with the product I make no warranties of any kind, either express or implied, including but not limited to warranties of merchantability, fitness for a particular purpose, false installment, misuse, any damages that may occur, of title, or of non-infringement of third party rights. Use of the product by a user is at the user's risk.

No representations or warranties, either express or implied, of merchantability, fitness for a specific purpose, the products to which the information mentions may be used without infringing the intellectual property rights of others, or of any other nature are made with respect to information or the product to which information mentions. in no case shall the information be considered a part of the terms and conditions of sale.